



OUR PEOPLE MAKE THE DIFFERENCE

KATOEN NATIE

KATOEN NATIE
PORT OPERATIONS
E U R O P E



Our approach is pro-active, aimed at operational excellence and continuous improvement. As our customer, you will find that above all, it's our people who make the difference: through their know-how, professionalism and dedication, they are there to satisfy your requirements.

Fernand Huts, President



TABLE OF CONTENTS

HISTORICAL ROOTS	05
BUSINESS UNIT PORT OPERATIONS IN ANTWERP, BELGIUM	07
GENERAL INFORMATION AND EQUIPMENT	09
COMMODITIES	
Containers	11
Steel products	13
Forest products	15
General cargo	17
RORO	19
Project cargo	21
PORT OPERATIONS IN ROUEN, FRANCE	22
PORT OPERATIONS IN TERNEUZEN, THE NETHERLANDS	23
SUPPORTING SERVICES	25
MISSION	27



Historical roots

Katoen Natie was founded in December 1854 in Antwerp, Belgium. The Katoen Natie Group's initial activities were related to cotton ("katoen"). When a ship berthed at the port quay, the captain and the crew unloaded the cargo, assisted by port stevedores. Once the cargo was on the quay, the "Natie" received it. Katoen Natie stored, weighed and controlled the quality of the cotton before it was distributed to the industry.

Diversification

As the years went by the Katoen Natie Group diversified its operations by handling, receiving and warehousing other products such as jute, coffee, steel, iron, fruit, tomatoes, etc. After the Second World War the organisation began to offer new services: storage of cargo in their own warehouses, delivery and customs clearance.

The great jump

In 1986 Katoen Natie purchased Seaport Terminals, an important stevedoring company in Antwerp, specialised in containers, forest products and general cargo.

This acquisition was followed by fifteen other stevedoring companies that were purchased by Katoen Natie and integrated in the mother company Seaport Terminals. This company became the core of port operations of the Katoen Natie group.

In 1986 the Group started operating containerised cargo at the port of Antwerp. That was the beginning of the internationalisation process that placed the Group in a position to offer services around the globe for different cargoes, products and activities.

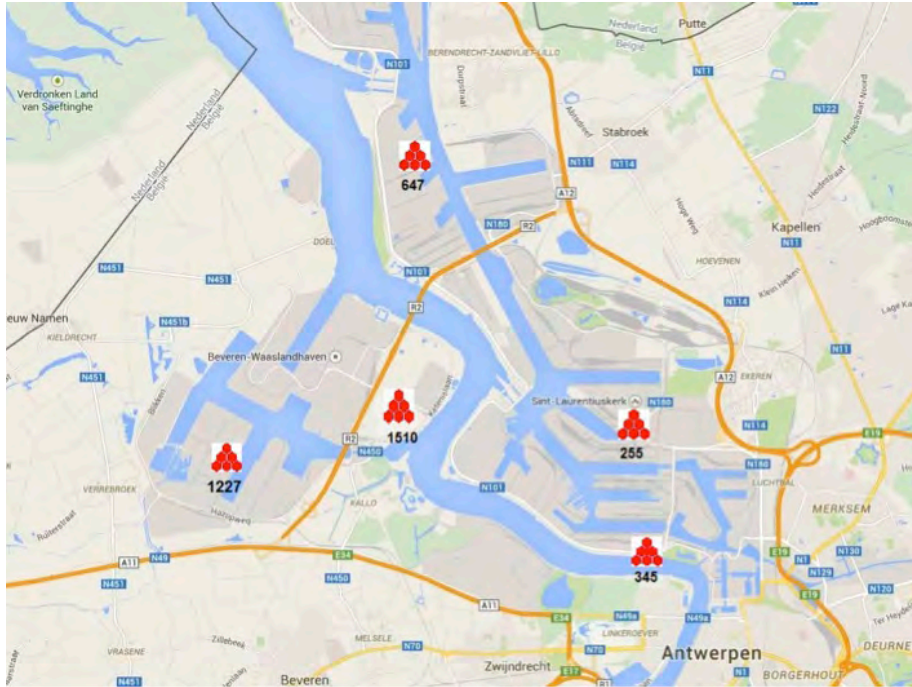


On the 14th October 2014, Katoen Natie was voted 'Company of the Year 2014'. This event was organised by Ernst & Young in partnership with the Belgian newspaper 'De Tijd' and BNP Paribas Fortis. The prize was handed over by H.M. the King of Belgium.

The Katoen Natie Group anno 2014

Worldwide logistics platforms	181
M2 of covered warehouse space	4,8 million
Number of silos worldwide	3.100
Number of employees worldwide	11.000
Privately held company	

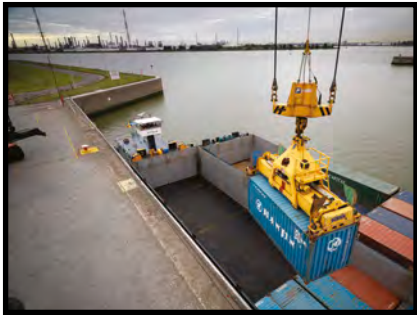
Business Unit Port Operations in Antwerp, Belgium



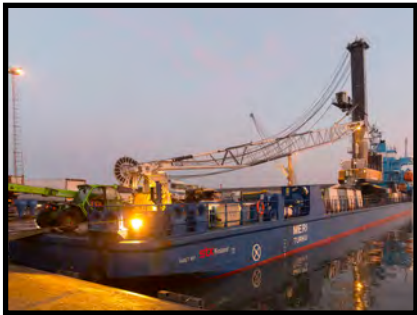
Katoen Natie Terminals Port Operations located in the Port of Antwerp



Quay 255



Quay 1510



Quay 1227

Quay 1227



Quay 345

Stevedoring services around the world are managed by the Business Unit Port Operations. This allows the Katoen Natie Group to share its know-how and to develop a global strategy.

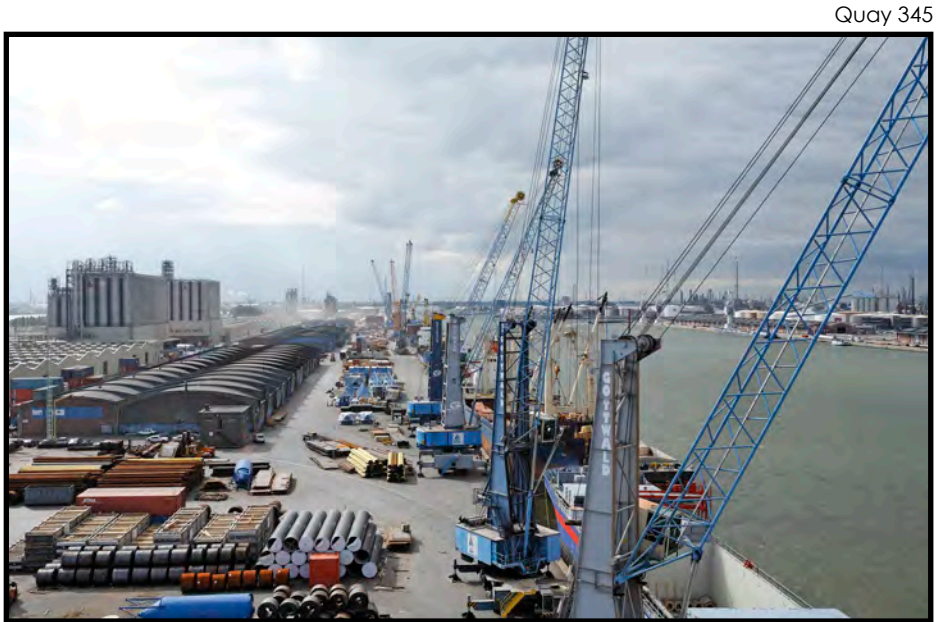
In the Port of Antwerp, Katoen Natie Port Operations owns and operates 3 deep-sea terminals on the right and left bank of the river Scheldt.

All terminals are well equipped with mobile and gantry cranes, hoisting material for a wide range of goods, extensive fleet of forklifts, ro-ro berths, container freight stations, rail connections and a large storage capacity. With our newest Liebherr mobile harbour cranes we can offer up to 416 mts lifting capacity (in tandem lift) for heavy lift cargo.

High flexibility and productivity in a safe working environment are our main drivers to perform a variety of services.

A team of well trained, motivated and highly productive people is ready to take care of your cargo, with the emphasis on quality.

Katoen Natie is present with stevedoring services in the Port of Antwerp at the following terminals: berth 1227, berth 345, berth 255, berth 1510 and berth 647.



Quay 345



General information

Total surface	1.450.000 m²
Covered surface	443.000 m ²
Quay lengths	3.030 m
Draft	10,50 up to 18 m

Equipment

Mobile cranes	2 x 208 mts
	1 x 140 mts
	3 x 100 mts
	7 x 65 mts
Gantry cranes	2 x 68 mts

Forklifts with all possible front equipment:

From 2 up to 7 mts	37
From 16 up to 18 mts	38
From 25 up to 34 mts	17

Straddle carriers	12
Empty stackers	5

Tugmasters and mafi trailers up to 100 mts, bobcats

Wide range of hoisting material, adjusted to the needs of the products to handle

Katoen Natie Terminals continuously invests in smarter and better manipulation equipment.





Containers

Equipped with 2 gantry cranes, 12 straddle carriers and several reach stackers, Katoen Natie Terminals Quay 1227 acts for containers as

- In- and outgoing gate for trucks, barges and rail
- Hub for containers received by Katoen Natie Bulk Terminals, who serves the petrochemical customers
- Planning, discharging and loading seagoing vessels
- Depot

Checkpoint Truck Gate In/Out is equipped with an automatic checkpoint registering system.

Drivers on the container yard follow the registration on easy workable dap terminals, which are built in all straddler carriers and reach stackers.

Barge terminal at Quay 1510 is located nearby the Katoen Natie logistics park 'Loghidden City' and the terminal acts as Gate In/Gate Out for container barge connections.

Loghidden City provides 1.200.000 m² covered warehouse. These warehouses are currently used for the storage of consumer goods, petrochemicals and food & feed products.



Extra Katoen Natie services:

- Own truck/barge transport fleet
- Reeferconnections
- Container repair
- Depot
- Reefer check, repair, monitoring
- Vessel planning



Steel products

Your steel cargo and our knowledge to handle the cargo, the perfect match.

With an average of handling over 1.000.000 mts per year, Katoen Natie Terminals has become the specialist in the handling of steel products.

Major steel traders decided to use our terminals as their hub in the Port of Antwerp, as from where they sell and distribute their goods.

Our terminals in the Antwerp Port Area have an excellent location nearby all significant highways to the European hinterland.

The complete stock keeping process is managed by in-house developed computer programs, which are at any time up to date with the physical stock on our terminal storage locations.

Providing tailor-made solutions, high quality standards, quick dispatch of the vessels, large storage capacity, smooth discharging and reloading operations are the key stones of our business.



Learning from years of experience, discussing and evaluating the requirements and feedback from our customers, resulted in long-term working relationships and cooperation with a wide range of Shipping Lines, Forwarding companies, traders and others, who entrust us to handle their cargo.





Forest products

Katoen Natie Terminals serves everyone involved in forest products, from producers to users, including importers and exporters, traders and agents, merchants and manufacturers. Moreover we handle all types of forest products, with specialist know-how and equipment to match. In short we bring everyone and everything together.

Katoen Natie Terminals has ISPS-certified secured terminals. They are equipped to handle open hatch vessels as well as conventional ones, with the possibility to switch between conventional and container vessels at any time.

Our specialised warehouses for forest products offer polished concrete floors and a minimum height of 10 meters. Container yard facilities are on the terminal together with many km of rail track.

Katoen Natie Terminals has a long tradition and proven know-how in handling pulp, paper, wood, timber, plywood, hardboard and biomass.

We handle all types and forms of forest products:

- Plywood in all its aspects
- Timber
- Logs
- Pellets
- Floorings for domestic and industrial use
- Hardwood / softwood
- Wood pulp
- Paper reels
- Biomass
- Machined timber / laminated / finger jointed
- Rough sawn, air dried / kiln dried wood
- Doorframes
- Veneer
- Veneer slices





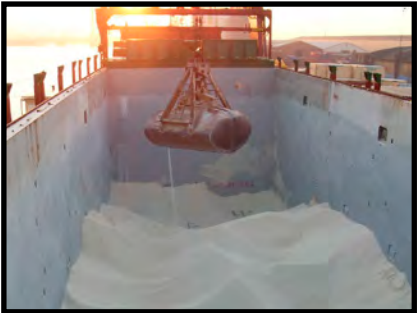
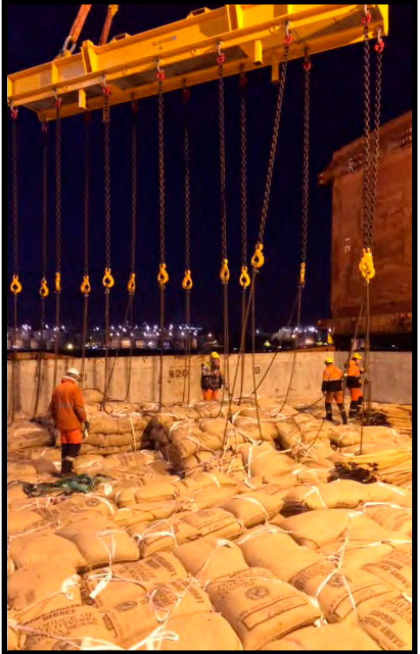
General cargo

With a wide range of shipping lines calling our terminals regularly, Katoen Natie Terminals has become an expert in the handling of IMPORT and EXPORT shipments for

a large variety of general cargo:

- Logs
- Bulk cargo
- Pallets
- Big bags
- Drums
- Non ferro
- Granite
- Cases
- ...

Katoen Natie Terminals has a wide spectrum of own handling equipment for all kinds of cargoes.



RORO Cargo

Several ro-ro berths are available so vessels with stern ramp, side ramp and quarter ramp can be handled simultaneously.

A parking area of 60.000 m² is currently foreseen for ro-ro storage, with expansion possible. The parking area is fenced off and controlled by multiple cameras, covering the complete parking area.

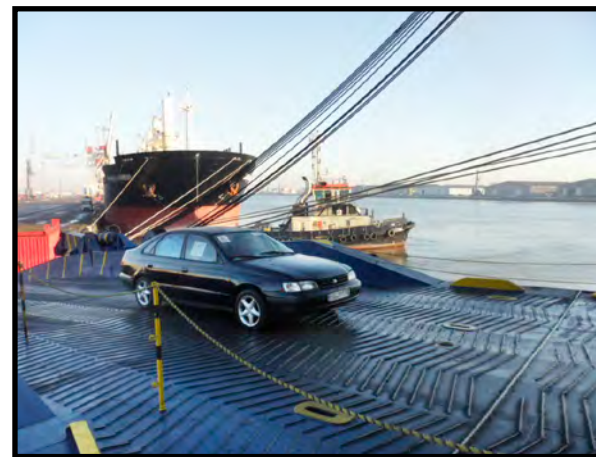
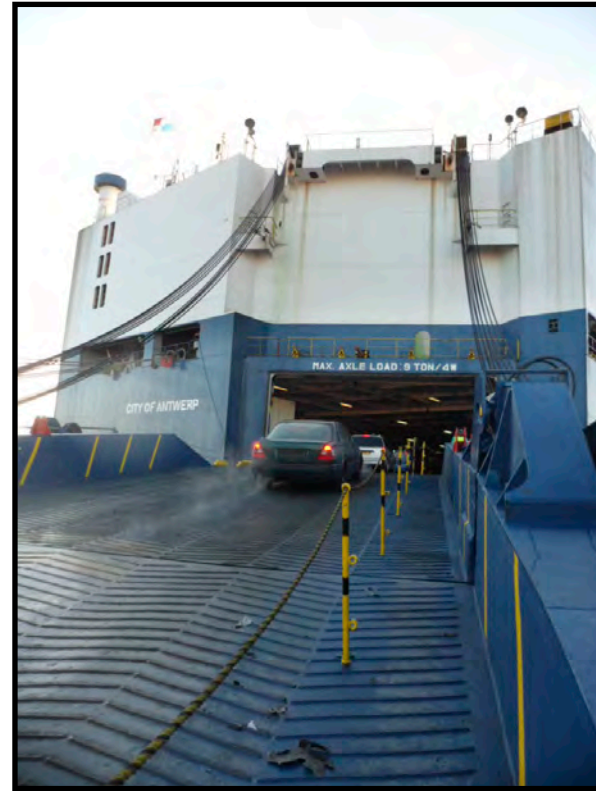
Gate In is controlled by a barrier and equipped with an automatic check in system, where truck drivers can register the vehicles themselves. This saves time and in the meantime enables our people at the gate to perform a thorough check of the incoming cargo.

A weighing bridge up to 60 mts is available at the gate.

Stock keeping is constantly up to date, using a scanning system as from delivery up to redelivery. Each vehicle is immediately checked and scanned upon arrival, with direct link to our computer system.

Own rolling equipment such as tugmasters, mafi trailers up to 100 mts and other equipment (f.e. jeeps) can be used to load and discharge all sorts of ro-ro cargo off/on board.

Also stevedoring operations can be followed in real time.





Project cargo

No cargo too big,
too high, too wide,
too heavy...

we can handle it!

With own mobile harbour
cranes from 65 mts up to 208
mts, we can offer a maximum
lifting capacity of 416 mts in
tandem mode.



Our terminals also provide

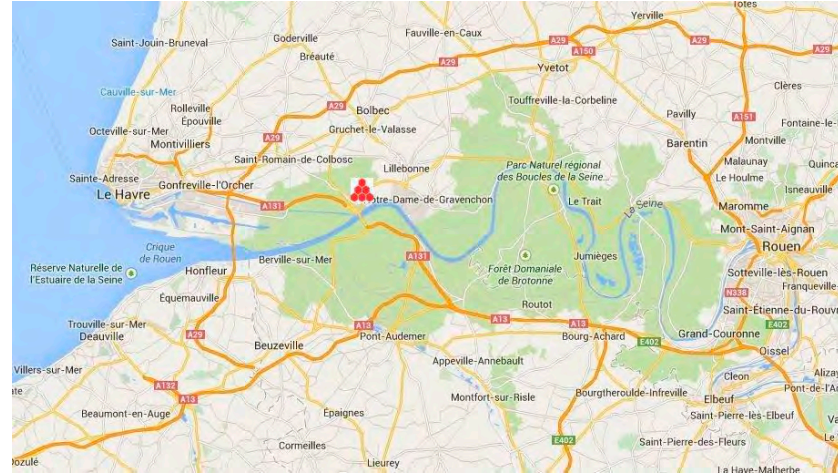
- Vast open space
- State of the art warehouses up to 12 m height
- Heavy power in each warehouse
- Deep draft up to 18 m (f.e. for submersibles)
- Adequate hoisting material

Port Operations in Rouen, France

RM Services, Katoen Natie's multipurpose terminal at Radicatel, is a river terminal located on the river Seine between Le Havre and Rouen.

As an inland terminal, RM Services provides an innovative and inexpensive alternative to over-crowded deep-sea terminals, as it offers perfect capabilities to store and transfer goods from and to the hinterland.

The ISPS certified terminal is well equipped for the handling of break bulk cargoes, heavy lifts, dry bulk cargoes (f.e. grain, wheat pellets), containers and has its own container freight station.



General information – Radicatel

Quay length & draft : 415 m / 10,70 m

RORO Berth

Equipment: 1 gantry crane
2 mobile cranes Liebherr 63 mts/ 124 mts
reach stackers, forklift, tug masters, excavators

Warehousing: 174.000 m2 covered warehouses and 40 silos



Port Operations in Terneuzen, The Netherlands

Katoen Natie Westerschelde

The ISPS certified terminal is located in the Braakmanhaven, next to the Dow plant and in close proximity of Value Park Terneuzen. It is ideally situated as connection for container barge traffic between Antwerp and Rotterdam.

Equipped with a gantry crane of 31 mts lifting capacity, Katoen Natie Terneuzen is able to handle barges with a width of 6 containers.

On the landside containers are handled by a reach stacker and can be transported by own trucks to the DOW site or Katoen Natie Logipark, both at only a short distance away.



General information - Terneuzen

Quay length and draft : 180 m / 6 m

Equipment: gantry crane
reach stacker, own trucks



The Katoen Natie Group in the world

Port activities, engineering, logistics and semi-industrial services

The Katoen Natie Group offers logistics and semi-industrial services to several industries, as well as port services for maritime transport companies. It has 400 operating units distributed over 150 terminals and logistics platforms all around the world. Over 10.000 people are employed at these facilities.

A
Operating port terminals, loading and unloading bulk cargo, general cargo, containers, automobiles and forest products. The customers for these activities are the shipping lines.

B
Operating logistics platforms for the storage and handling of industrial products, commodities, consumer goods, chemicals, petrochemicals and food products.

C
Creating "on-site" or "wall-to-wall" customer platforms.

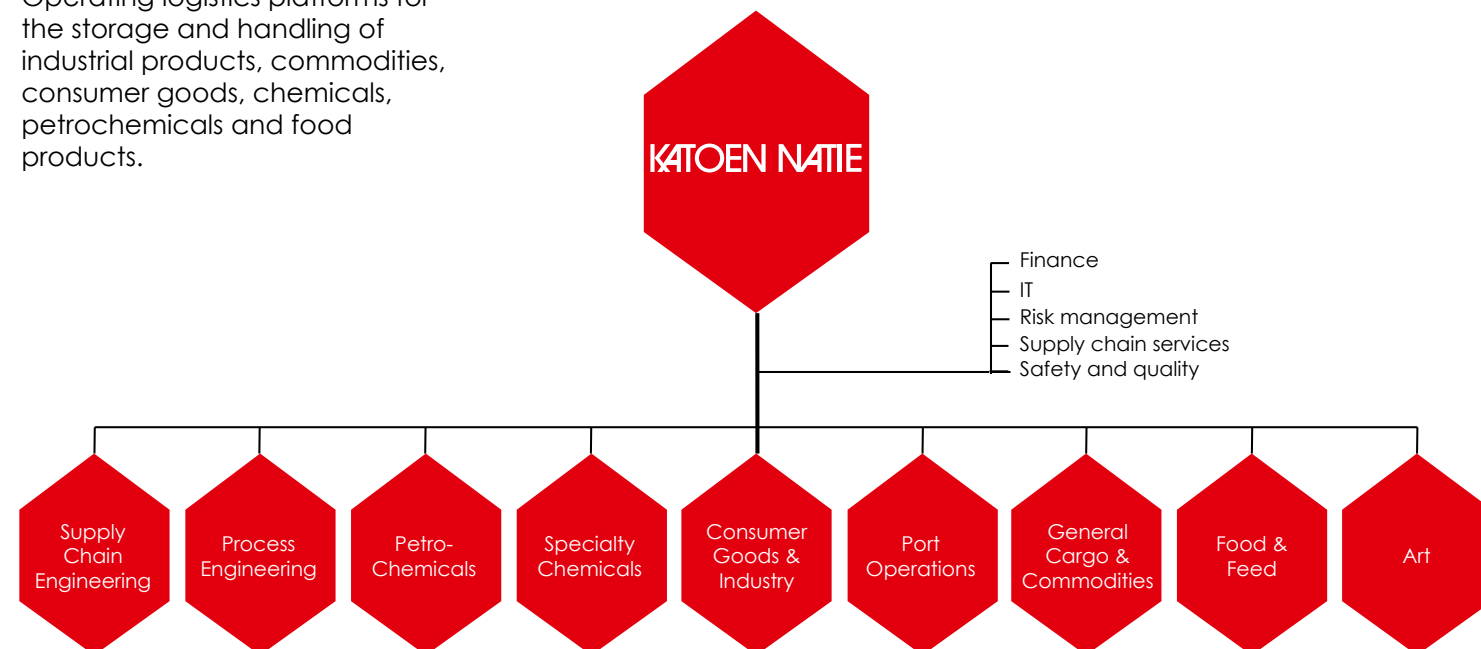
D
Rendering semi-industrial services, such as homogenisation, repackaging, dust elimination, compounding, demetallisation, assembly, pre-assembly, kitting, postponement, etc.

E
Developing activities in the areas of design, engineering, construction, financing and management of supply chains and logistics platforms for the industry.

Organisation by sectors

The Katoen Natie Group is structured according to the needs of each industrial sector. This is the reason why the Business Units were created.

Each business unit enjoys great autonomy and a fully independent operating structure. The strength of the business units is their products knowledge and specialised know how for handling these products.



Supporting services

Technical department

- Maintenance equipment
- Cutting steel plates

IT

- In house development & helpdesk support
- Scanning system
- EDI links

Transport

- Katoen Natie truck and barge fleet

Documentation

- Forwarding
- Customs formalities

In house lashing & securing

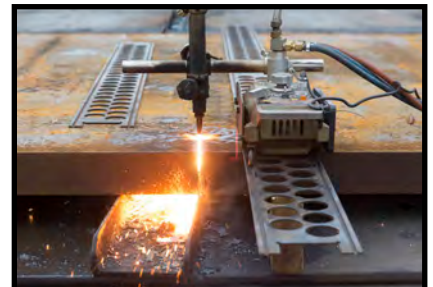
- Roro
- General cargo
- Heavy lifts
- Rail wagons
- Containers
- Stuffed containers
- Flats
- Mafi trailers

ISO containers, reefers and tank containers

- Maintenance and repair
- Cleaning
- Empty container depot
- Reefer monitoring
- Refurbishment

Engineering

- Design and construction
- Tailor made
- Building on site platforms
- Warehouses





Our mission

Dear customers,

We are very proud that the Katoen Natie Group is still a family owned company.

The vision and philosophy of the owners are the foundation of the success and expansion of the Katoen Natie Group.

The future of our company is built on this outstanding and stable structure and no-nonsense mentality.

This family atmosphere is exactly the feeling we like to share with you.

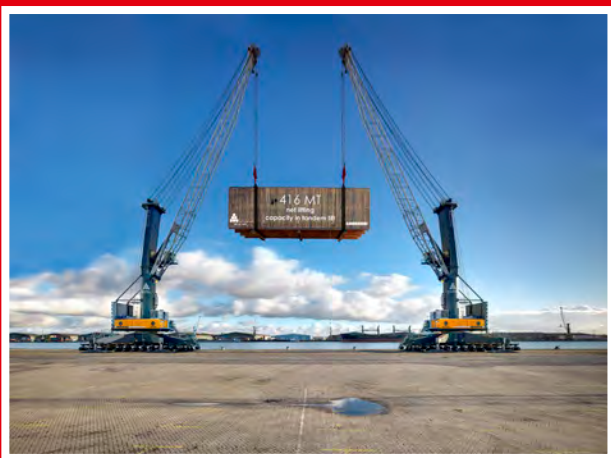
It is our mission to make you feel relaxed and comfortable with us handling your cargo.

Our motivated people are committed day and night to provide you a tailor made, flexible and professional service.

We kindly invite you to visit one of our terminals, where you can experience the Katoen Natie "home port" feeling.

With kind regards,
Katoen Natie Port Operations





Katoen Natie Terminals N.V.
Your stevedoring partner

www.katoennatie.com

Contact :

Katoen Natie Terminals Antwerp
Joos.melis@katoennatie.com
+32 3 570 66 63
Ivan.hollanders@katoennatie.com
+32 3 560 75 02

RM Services Radicatel
Arnaud.aubry@katoennatie.com
+33 232 84 15 98

Katoen Natie Westerschelde Terneuzen
Ad.dees@katoennatie.com
+31 115 46 64 53



OUR PEOPLE MAKE THE DIFFERENCE

KATOEN NATIE